



**Torrey Pines
Ski Club**

YEAR ROUND SPORTS & SOCIAL CLUB

We Live Mid-Life to the Max!

Find us on the web at www.tpscsd.org

JULY 2008

**46th ANNIVERSARY
1962-2008**

President's Corner



One of our most active volunteers is **Barbara Shramek**. She manages our membership, directs our newsletter, and chairs many activities.

Barb was born in Salt Lake City, Utah and at four moved to a farm just outside of Grand Junction, Colorado. She attended GJHS where she played the violin in the symphony orchestra, was in the Pep Club, and was on the staff of both the school Newspaper and Year Book.

After graduation from high school, Barb attended Mesa Junior College in Grand Junction where she was on the Year Book staff and part of the athletic department's Precision Dance team. This Dance team performed at football and basketball games and often traveled with the teams to away games. In addition, Barb was President of the Outing Club and a Student Council Officer.

From there, Barb went on to Colorado State College in Greeley, Colorado where she majored in Education and was also on the Year Book staff for one year. After earning her BA degree, Barb came to San Diego and went to work

for the San Diego Unified School District. During her career here, Barb taught second and third grades and received her MA in Educational Psychology from USIU.

Barb is now retired. She has one son who is coaching high school football in Mississippi.

For TPSC, besides membership and newsletter, Barb has been Reception Officer, Assistant Treasurer, Recording Secretary, Vice President, and President. We selected her as TPSC Woman of the Year four times, in 1994-95, 2000-01, 2002-03, and 2005-06. Although not Portuguese, through friends, Barb became active with the Portuguese American Club. She is now on the Executive board of the Cabrillo Festival, Inc.

Barb is also active with several museum groups and is our contact person for "Senior Mondays" at the Reuben H. Fleet Science Center and "Tower After Hours" at the Museum of Man. She is organizing our Taylor Guitars Factory Tour, summer evenings at the Organ Pavilion, and well... we never know what Barb will come up with next. Join her and us at one or all of these great activities.



It's renewal time!

THIS JULY NEWSLETTER IS YOUR LAST NEWSLETTER FOR 2008... UNLESS YOU HAVE RENEWED YOUR MEMBERSHIP.

Yes, it's that time again! **COMPLETELY FILL IN THE MEMBERSHIP APPLICATION.**

Use an address label if you wish. If you want to keep up to date on any late breaking TPSC news and events you will need to include your email address for weekly reminders. **PLEASE PRINT CLEARLY.** Please sign and return your application today. **Include your \$35.00 check made payable to TPSC.** Mail your check/application to the address on the application. We don't want you to miss a single issue of the newsletter or any of the exciting events that are coming up this year. Thanks!

Barbara Shramek 619-286-1250 bjshramek@aol.com

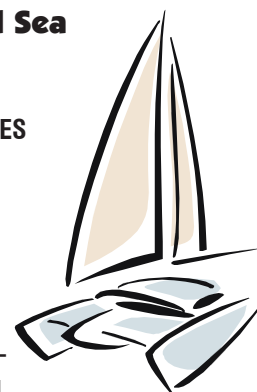


Newsletter Announcement:

Thank you to those that have returned your 2008-2009 membership applications. However, several of you have **not** included your email or phone number. Therefore you will not be receiving the email reminders and it will be difficult for trip leaders to get in touch with you.

Fun-Fun-Fun in the Sun and Sea Beautiful Catalina Island (Avalon Harbor)

**UNLIMITED LAND AND SEA ACTIVITIES
3 DAYS-2 NIGHTS
WEDNESDAY-FRIDAY
OCTOBER 1-3, 2008
\$240 PER PERSON-DOUBLE
OCCUPANCY (MEMBERS)
\$275.00 (GUESTS)**



This event includes All transportation-bus from San Diego to Long Beach and a smooth-riding boat to Catalina and return.

We will spend two nights on the beautiful waterfront located at the Pavilion Lodge (3 rooms- king bed and 12 rooms- 2 double beds)... also includes - two Continental breakfasts.

Full payment must be received for reservation. Include email address or SASE, preferred room and names of room-mate. We cannot accommodate more than 30 people. If you are interested, please reserve early. Deadline for payment is August 25. **Make checks payable to TPSC and send to:**

**Janet Tremaine 1301 Fort Stockton Drive San Diego, CA 92103
619-297-0937 johnbauer@aol.com**

JUST FOR FUN

Symphony Summer Pops

MARVIN HAMLISCH
EMBARCADERO MARINA PARK
SATURDAY, JULY 5, 2008
7:30 PM
MEMBERS-\$27.00
NON-MEMBERS \$30.00

Wear your red, white and blue and miss all of the crowds and traffic. Celebrate the 4th at the Symphony Summer Pops Concert on Saturday, July 5. Marvin Hamlisch hosts a Star Spangled evening with Broadway hits, Sousa music and a salute to our military. Of course, it will be followed by a red, white and boom fireworks display over the harbor. We will be sitting in the Cabaret II (tables of 4) section for this great event. We have a limited number of seats so **send your check in early**. You can bring your own picnic dinner or purchase food from one of the vendors and enjoy it at your table. You can bring in anything, but no glass or alcohol. You can purchase alcohol on the grounds. The gates open at 6:00 PM with pre-show entertainment and the show starts at 7:30 PM. Tickets will be mailed to you upon receipt of your check.



Send your check made payable to TPSC with a SASE to:
Debbie Schroeder, 2331 Darlington Row, La Jolla CA 92037 - 858-551-9651

Senior Monday at the Reuben Fleet Science Center

BALBOA PARK
MONDAY, JULY 7, 2008
12:00 – 2:00 PM
\$5.00 ENTRANCE FEE (FOR SENIORS ABOVE 65)



Join scientists from around the country to learn about a variety of topics as they share the latest information in a friendly and exciting environment. Come early to enjoy complimentary refreshments. Each lecture takes place in the Grayson Boehm Lecture Hall from 12:30 – 2:00 PM. The entrance fee of only \$5.00 includes the lecture on **Human Origins**. You may also enjoy the current exhibits and the 2:00 PM IMAX movie **AMAZING JOURNEYS** (1999) Join the sweeping spectacle of migrating zebras, red crabs, monarch butterflies and majestic gray whales along with many other species as we follow incredible animal migrations happening all over the globe. [40 minutes]

*Programs are subject to change.
Barbara Shramek 619-286-1250

Taylor Guitars Factory

1980 GILLESPIE WAY
EL CAJON, CA 92020
WEDNESDAY, JULY 9, 2008
10:00 AM

This event is Full and there is a wait list. If you would like to go on a tour... probably in the afternoon on a different date...please let me know and I will arrange another tour.

Go to this link to hear the interview with Bob Taylor of Taylor Guitars
http://jeffandjer.star941sandiego.com/cc-common/podcast/single_podcast.html?podcast=jeffandjer_archive.xml

Barbara Shramek 619-286-1250 bjshramek@aol.com



Beach Bunch at the Bay

SUNSET POINT ON MISSION BAY
THURSDAY, JULY 10 AND 24
5:00 PM



It's that time of year for our Thursday evenings at Sunset Point on the Bay (TG 1268 A3) Come join us for a casual evening of socializing. This is a "no host" event with the group gathering around 5:00 PM. Everyone brings a beach chair, something to share for dinner and we aim to eat about 6:00 PM. Bring your own supplies (plates and silverware) and beverage. **Remember booze is no longer allowed at the beach...** be creative. We stay for a nice time around the fire, so please bring firewood.

Suzanne Bradbury 619-225-0342
Larry Benthien 619-670-1949

Happy Hour Holiday Inn Bayside

4875 HARBOR DRIVE
PT. LOMA (NOT EMBARCADERO LOCATION)
FRIDAY, JULY 11, 2008
5:00 - 6:30 PM

Our choice this month is to return to the Holiday Inn Bayside. Happy Hour prices, appetizers and plenty of free parking. Numerous restaurants in the area for those who like to dine afterwards. Come join us and bring along a friend.

Janet Hanson 858-278-9581 (cell 858-336-8396) dublbunny@aol.com



Café Eleven

1440 UNIVERSITY AVE. IN HILLCREST
619-260-8023
TUESDAY, JULY 15, 2008
6:30 PM



We'll be celebrating Bastille Day one day late this year at this wonderful neighborhood French Café. They have an excellent prix fixe dinner at \$13.95 that's sure to please you. Come join us:

Janet Spiro 619-291-1935 jspiro@webtv.net

JUST FOR FUN

**Walk With
Janet & Louise**
UNIVERSITY OF SAN DIEGO
ALUMNI CENTER/EAST
ENTRANCE
OFF LINDA VISTA ROAD
FRIDAY, JULY 18, 2008
9:30 AM



Join Janet, Louise and Brad (our "historian") for a walk through the beautiful USD campus with panoramic views of the Pacific Ocean, Mission Bay and Tecolote Canyon. We will meet in front of the Alumni Center building at 9:30 AM (TB 1268 G2).

Enter the campus using the USD Main Driveway (East Entrance) up the hill off Linda Vista Road. Look for the traffic signal. Do NOT use the West Entrance at the bottom of the hill. Stop at the guard Kiosk to obtain a parking permit. Ask for a temporary Visitor Pass. Proceed straight and bear right onto the top level of the Mission Parking Structure. Park in White lined spaces only. Do not park in any reserved spaces. Walk from the parking structure and bear left to the Alumni Center building which is just across the driveway.

We plan to have lunch following the walk at the Market Place Deli located in the Hahn University Center.

Janet Hanson 858-278-9581 (cell 858-336-8396) DublBunny@aol.com
Louise Oliverio 858-569-9999 (cell 858-220-2336) louiseolive@sbcglobal.net

**La Jolla Pancake
Breakfast Ride**
SATURDAY, JULY 26, 2008
MEET AT LA JOLLA LIBRARY
7555 DRAPER AVENUE
9:45 AM
\$7.00

Join us for a bike ride around La Jolla and we will end up at the 45th Annual Kiwanis Pancake Breakfast. Meet for the bike ride at 9:45 AM at the La Jolla Library, 7555 Draper Ave (TG 1227 E7). The ride will be about one hour long – mostly flat. After the ride we will go over to the breakfast. It is all you can eat for \$7.00. There will be live music, raffle prizes and more! **If you do not plan to ride, meet us at the breakfast at the La Jolla Parks and Recreation Center**, corner of Draper and Prospect at 11:00 AM. Breakfast is served until noon.



Hobe Schroeder 858-551-9651 (cell 858-336-0539)

Bocce Ball
SUNSET POINT ON MISSION BAY
SUNDAY, JULY 27, 2008
2:00 PM



Join us at **Sunset Point on Mission Bay** for an informal afternoon of Bocce Ball. We will be meeting at 2:00 PM at **The Dana on Mission Bay Drive** (on Dana Landing Road...TG 1268 A3). Novice players are welcome. Bring a chair, drinks, (no alcohol) and snacks. If you have a set of Bocce Balls, please bring them also. Spectators are welcome and afterwards we will see if anyone wants to do a group dinner.

Tom Rothenburg 619-435-0662 (cell 619-990-0472)

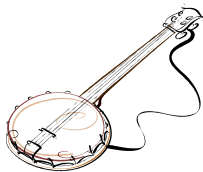
Tower After Hours
SAN DIEGO MUSEUM OF MAN
BALBOA PARK (619-239-2001)
THURSDAY, JULY 31, 2008
6:00 – 8:00 PM
\$20.00 REGULAR ADMISSION
\$15.00 SENIOR ADMISSION
\$10.00 MUSEUM OF MAN
MEMBERS

Mark your calendar for Thursday evening when the Museum of Man celebrates the country of **Columbia**. Experience the rich heritage by sampling regional food, drink and entertainment. Tickets may be purchased at the door.

***(FYI – Germany on Sept. 25—Portugal on Oct. 30—last for the year)**
Barbara Shramek 619-286-1250



**Twilight Concert
in the Park**
SAN DIEGO BANJO BAND
SPRECKELS ORGAN PAVILION
BALBOA PARK
THURSDAY, JULY 31, 2008
6:15-7:15 PM



The San Diego Banjo Band will be playing at the free Balboa Park Twilight Series Concert at the Organ Pavilion. Let's support this fun group! Look for the TPSC group somewhere in the center section.

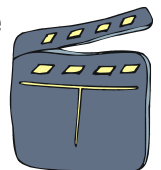
Meet at the Prado at 4:00 PM for a pre-concert happy hour. Bring a friend

Diane Mensch 619-435-3931

Movies By The Sea
LA JOLLA COVE
HOLD THESE DATES
FRIDAY, AUGUST 1 AND FRIDAY,
AUGUST 8, 2008

A free movie at La Jolla Cove, picnic at the Scripps Park and watch the sunset over the ocean - enjoy all of that when you attend the Annual Movies by the Sea at La Jolla Cove. Details and movie announcements in the August newsletter.

Hobe Schroeder 858-551-9651



SAVE THIS DATE – Thursday, August 14 – 7:30 PM for Summerfest Under the Stars – La Jolla Music Society at the La Jolla Cove. Come early (why not bike in) Picnic at 5:30 PM. We will be saving a spot for you.

Janet Tremaine 619-297-0937

JUST FOR FUN

**Dennis James Silent
Movie Night**
BALBOA PARK SPRECKELS
ORGAN PAVILION
MONDAY, AUGUST 18, 2008
6:30 PM PICNIC DINNER
IN THE PARK
7:30 PM PROGRAM BEGINS

Have you seen a silent movie as it was originally seen-accompanied by a pipe organ? Now you can. **Come early to save your seat.** Find a spot nearby to have a picnic in the park. There will be the featured movie with music on the wonderful Spreckels organ. This event is always popular with the public and **seats fill up quickly.** The program begins at approximately 7:30 PM. We try to sit in the area near the front and as close to the center as possible.

Barbara Shramek 619-286-1250 (cell 619-876-1850)



**Biking/Concert-
Coronado/Spreckels
Park**
SUNDAY, AUGUST 24, 2008
3:30 PM
CONCERT 6:00 – 7:00 PM



Join us as we bike and picnic at Coronado's Sunday afternoon concert in the park. We will meet at 3:30 PM at 6th and Orange in Coronado/Spreckel's Park (TG 1288 J6). We will bike around Coronado and down the strand and bike path, returning around 5:00 PM to picnic and enjoy the concert at 6:00 PM. We will be listening to the popular "Benny Hollman Big Band". You can pick up dinner at a deli/restaurant in the area or keep your food in the car until we go to the park. **If you are not bike riding...plan to join our group at 5:30 PM in the park.** Bring a chair, blanket and BYOB. This is always a fun event and you won't want to miss it.

Camille Rothenburg 619-435-0662 (cell 619-990-0473)

**Plan Ahead – Add this
to your calendar!**
**Janet's Newport Beach
Bike Ride**
SAT., SEPTEMBER 13, 2008
8:00 AM
20-30 MILES FLAT
MEET AT MISSION BAY
INFORMATION CENTER

Join us on Saturday, September 13 at 8:00 AM for our annual oceanfront bike ride in Newport Beach. Meet at the Mission Bay Info Center (TG 1248 D7) lower area large parking lot. We will pass out directions on the spot. We will leave there by car and stop in San Juan Capistrano for breakfast. After breakfast we will head off to Balboa Island, park, catch the ferry and bike from there. The ride is 25-30 miles, flat oceanfront, easy ride with a break for lunch in Huntington Beach. This is a full fun day! Many of us also stop on the way home for a Happy Hour on the pier in San Clemente. You can plan on arriving back in San Diego 6:00-7:00 PM. You might want to make plans to carpool, etc. Join us for this lovely oceanfront ride. **PLEASE RSVP TO:**



Janet Hanson 858-278-9581 (cell 858-336-8396) dublbunny@aol.com



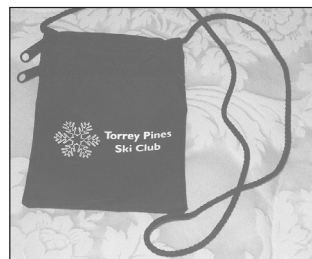
COMING IN AUGUST – Cabrillo Festival Fish Fry by the Famous Ed Rose. More information to come.

Barbara Shramek 619-286-1250 (cell 619-876-1850)

Neck Wallets and TPSC Golf Shirts

We have neck wallets with the Torrey Pines logo. They are black with white lettering and have two separate zippered compartments. They are light weight, waterproof and only cost \$5.00. The TP golf shirts are green with the Torrey Pines logo and are \$15.00. Call or see Tom Rothenburg at the general meetings to buy yours. Please make checks payable to TPSC.

Tom Rothenburg 619-435-0662 crothen1@san.rr.com



TPSC 2009 Ski Trips

We have not completely formulated our trips for next year but we can give you the dates:

January 11-16, 2009 Mammoth Deposit \$100.

January 24-31, 2009 FWSA trip to Big Sky Montana
Deposit \$300. payable to San Diego Council of Ski Clubs and
mail to: Susan Shafer, 12384 Sardina Cove San Diego CA 92130

February 7-14, 2009 Utah or Colorado (Park City/Deer Valley or Aspen or Vail) Deposit \$250. 6 or 7 days, 5 of 7 day lift tickets.

March 22-27, 2009 Mammoth Deposit \$100.

Except for the Far West Trip, Make deposits payable to TPSC and send to: **Joe Goldhammer 5016 College Gardens Ct. San Diego CA 92115 619-286-0624**

If you would like to be a trip leader or an assistant, please call Joe Goldhammer. If we don't get volunteers, we won't run these trips.

SD Council of Ski Clubs-Convention

At the June San Diego Council of Ski Clubs meeting we learned of the latest addition to the Far West Ski Association travel program, a trip to Bad Gasstein, Austria scheduled for February 27 to March 7, 2009. We also discussed the increase in airline rates and prepared for attending the 76th Annual FWSA Convention held on June 5-8. Besides most of our council officers, nine Torrey Piners made their way up to the Seattle area for the convention. Some went for the meetings, some for the fun, and most for a little of both. At this writing we are still recovering from the busy weekend up north where we gathered, discussed, and of course, partied with our cohorts representing ski clubs from all over the Far West Region. A complete report will appear in the next newsletter.

Laura Meldrum

JULY BIKE RIDES

THANKS TO ALL WHO HAVE HELPED ME OVER THE PAST THREE YEARS WHILE I WAS THE BIKING COORDINATOR. LET'S SUPPORT OUR NEW COORDINATOR, KATHY HAGENBACH.

DAY/TIME	LEVEL	LUNCH	WHERE TO MEET	LEADER
Sat. July 5 10:00 AM	A 12	Hodad's	Bay to Beach Quivira Rd Mission Bay front of seafood restaurant (TG 1268 A3)	Eileen Frame 858-569-0962
Sat. July 12 10:00 AM	A 12	Victor's	Bay Loop Parking lot north of Visitor Ctr, Mission Bay (TG 1248 D7)	Bob Tauber 858-273-4996
Sat. July 19 10:00 AM	A 12	Hudson Bay Seafood	Bay to Broadway Bali Hai parking lot N Shelter Island (TG 1268 C3)	Mary Coates 858-453-5376
Sat. July 26 9:45 AM	A 12	Kiwanis Pancake Breakfast	La Jolla Pancake Ride La Jolla Library 7555 Draper Ave (TG 1227 E7)	Hobe Schroeder 858-551-9651 Cell 858-336-0539



See related article for this always fun annual event

Bike Coordinator: Kathy Hagenbach 858-485-5506 khagen@att.net

Although helmets are not usually required, they are strongly recommended for all of our bike rides. We are always looking for volunteer leaders for the A and B rides. Please call Kathy Hagenbach, coordinator, (858-485-5506) if you are interested.

Saturday A rides – mostly flat

Sunday B rides – gentle hills

All Star Rides . . . A and B are offered.

TG = Thomas Bros. Guide followed by coordinates. Please note in case of rain - call the bike leader listed above. Also the ride will depart 15 minutes after the meeting time.

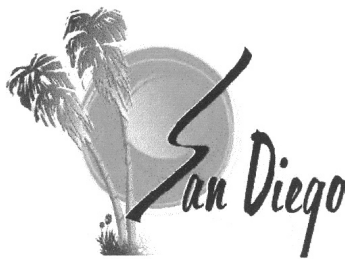
Health and Safety

TEN MOST FATTENING FOODS (FROM WEBMD ARTICLE)

- Ice Cream – Forget the toppings and waffle cones. Hold out for a single scoop. Better yet, choose yogurt or try light ice cream.
- Hot Dogs – Try to eat only one with chili and cheese, or wrapped in corn bread and top with relish. Remember they are loaded with fat and sodium.
- Chocolate – Dark chocolate is better than milk chocolate, but only if you have a small portion.
- Brunch – Brunch is usually full of high calorie fat laden foods. Stick to simply prepared eggs, sliced meats, whole grain breads and fruit for a full meal.
- Toppings, Dressings and Sauces – Hollandaise, whipped cream, high fat and sugar salad dressings are all a high calorie landmine. Try to use just a little dab to keep the calories in check.
- Seasonal Beverages – Eggnog, ice cream drinks, coffee drinks, and tropical cocktails are nice to sip on the patio with friends, but they add high amounts of calories. A few drinks can add hundreds of extra calories.
- Passover Desserts – Nuts, chocolate and coconut are high calorie land mines. Keep your portions small.
- Salads – It isn't the lettuce, but it is the dressings you use. Chicken, potato and tuna salads are some of the ones loaded with mayonnaise. Use light dressings.
- Grilled Foods – Burgers, fries, hot dogs, ribs and steaks are loaded with fat and sodium. You should also include sausages like bratwurst in this group. Try fish, poultry, lean meats, fruit and veggies for the low calorie helpers.
- Coconut – This contains saturated fat. Coconut is used and served with shrimp, pies, cookies and smoothies. One ounce of the sweetened kind of coconut found at your grocery store contains 129 calories and 8 grams of fat. Fried coconut shrimp contains about 300 calories. Try to stay away from coconut. (My favorite is coconut macaroons)



Jerry Seifert



San Diego Council Of Ski Clubs

Council Family Picnic – This year's picnic will be Sunday, August 10th at Sweetwater Regional Park hosted by the North Island Snowdrifters. It will be catered by Becker's. Dinner will be \$15 a person. A few camping sites are still available and will accommodate campers and tents at \$20/day. Contact Paula regarding camping (760)294-3085.

Winter Gala – Save Nov. 8th for this wonderful event. Once again the Gala will be held at the Marriott Courtyard in Kearney Mesa. \$49.00/person includes dinner and dancing to North Star. It's a great reason to get dressed up and welcome in the season with your friends. Don't miss the fun!

San Diego Council Ski Trips

Aspen Colorado – December 11-17, 2008. \$1075 (approx) includes lodging, lifts and airfare. Stay at the Gant, luxury condos. \$100 down. Mike Sanford 858-695-1442.

Far West Travel

Greek Islands - Oct 1-17, 2008. \$3250 per person. Travel to Rhodes, Crete, Santorini and Mykonos and Athens. Istanbul is optional.

Big Sky Montana – January 24-31, 2009. \$900-\$1485 depending on lodging selection. Optional day in Yellowstone. \$300 fully refundable deposit until July 1, 2008. Payable to San Diego Council of Ski Clubs. Susan Shaffer (858)481-5043.

Austria, Bad Gasstein (1 hour from Salzburg) – February 27-March 7, 2009. \$1690 per person includes air and breakfast. Does not include lifts. Add Munich & Prague – March 7-14 for additional \$899. Winter snow blankets more than 125 miles of slopes for all levels. \$200 deposit, (\$400 including Munich & Prague) fully refundable -\$25 each venue until Nov. 1, 2008.

For more information on travel go to FWSA Website at <http://www.fwsa.org>

NSCF – Did you know Mike Sanford is the new National Ski Council Federation President? He is also a wealth of information! Shall we call him "Ski Gyro?" According to Mike, web site users can obtain information on discounts and cost effective travel insurance by using certain credit cards (AMEX & AIG etc.) for purchase of travel on: www.skifederation.org and www.nationalskicouncil.org

Council Rep. Nance Thielen nthielen@ucsd.edu



Officers for 2008-2009



Debbie receiving her Women of the Year Award

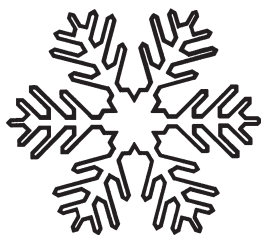


Ken Kramer



June General Meeting

Simpson's Nursery in Jamul



This July newsletter is your last newsletter... unless you have renewed for the 2008-2009 Membership Year. Send in your **COMPLETLEY FILLED IN AND SIGNED APPLICATION FORM** with your check for \$35.00 made out to TPSC.

Barbara Shramek



We are seeking an Assistant Treasurer for the club. Please contact any board member if you are interested. We are also in need of trip leaders and co-leaders for the upcoming ski season. Without trip leaders there will be no trips.

Joe Goldhammer 619-286-0624



TORREY PINES SKI CLUB
A CALIFORNIA NON-PROFIT CORPORATION

NEWSLETTER STAFF

Editor: Barbara Shramek
Printing: Fletcher Hills Printing
Newsletter Mailing: Barbara Shramek

OFFICERS AND BOARD MEMBERS

President	Laura Meldrum*	858-483-7290
Vice President	Debbie Schroeder*	858-551-9651
Corporate Secretary	Fred Blecksmith*	619-233-4149
Recording Secretary	Susan O'Connell*	858-205-8414
Treasurer	Joe Goldhammer*	619-286-0624
Membership	Barbara Shramek*	619-286-1250
Newsletter Editor	Barbara Shramek	619-286-1250
Co-Meetings	Melanie Traci*	858-375-7966
Co Meetings	Larry Benthien	619-602-0925
Racing/Web	Laura Meldrum	858-483-7290
SD Council	Nance Thielen*	858-695-0269
Marketing	Hobe Schroeder*	858-551-9651
Biking	Kathy Hagenbach	858-485-5506
Co-Reception	Theresa Browne	858-452-6558
Co-Reception	Nance Thielen	858-695-0269
Just For Fun	Debbie Schroeder	858-551-9651
Bocce Ball	Tom Rothenburg	619-435-0662
Ethnic Dining	Janet Spiro	619-291-1935
Happy Hour	Janet Hanson	858-278-9581
Walks	Louise Oliverio	858-569-9999
Equipment	Joe Goldhammer	619-286-0624
Past President	Debbie Schroeder	858-551-9651

* Denotes Voting Board Member

Ski Committee: Joe Goldhammer, Fred Blecksmith, Tom Delahanty

GENERAL INFORMATION

CALL 619/583-8832

Organization: Torrey Pines Ski Club is a non-profit California Corporation. Membership: Annual dues of \$35 are payable in full with the application for membership. Applications are available at any time at the General Meetings of the Club. Any donations made to Torrey Pines Ski Club for raffle tickets or other fund-raising events are not tax deductible.

TRIP RULES

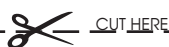
- 1. RESERVATIONS.** A check for the full amount required, received by the trip captain, is a request for a reservation. The trip captain will make the initial count five days after the flyer postmark. Directors of the board and Officers will be given priority if they inform the trip captain before the initial count. If there are more checks than seats available, checks will be drawn at random until the trip is filled. The trip captain will strive to reach a 50-50 male-to-female ratio. Couples should send their checks in together and they will be drawn as a pair. All participants must sign a release before departure.
- 2. CANCELLATIONS & REFUNDS.** In the event of your cancellation, a refund will be made only if the seat vacancy is filled or if monies are recovered by the club. There also will be a non-refundable cancellation fee for all cancellations whether or not your spot is filled as follows: \$10 for trips up to \$100; \$20 for trips \$100 - \$300; \$30 for trips above \$300. **There will be an additional \$20 charge for any returned checks.** All departure times, locations, lodging, and other travel arrangements are subject to change without notice.
- 3. WAITING LIST.** On ski trips, those on the waiting list due to the lottery will be accorded priority seating on the trip announced in the following flyer if they inform the trip captain before reservations are confirmed, i.e., the fifth day after the mailing of that flyer.
- 4. CHECKS.** Checks will be destroyed from those not going on that trip due to being on the waiting list.
- 5. CONFIRMATIONS.** You **MUST** call and confirm your status with the trip captain **UNLESS** a SASE (self-addressed stamped envelope) is requested in the trip write up. You **MUST** include your work and home telephone numbers with your check.
- 6. GUESTS.** Guests who are sponsored by a member are allowed on trips. TPSC members have 5 days priority after the newsletter announcement to sign up for a trip. After 5 days, members may sign up one guest by including an additional amount on their check as follows (unless otherwise noted): for trips under \$50, there will be either member priority or a guest fee; \$10 for trips costing \$50-\$100; \$35 (cost of membership dues) for trips costing over \$100. Guests, like members of TPSC, must be at least 21 years of age and agree to the club "General Release and Waiver."
- 7. EVENT GUESTS:** Members and guests not on the event/trip and who join a happy hour and/or dinner will be charged \$8.00 per person per occurrence for the happy hour; \$20.00 per person per occurrence for the dinner or combo happy hour/dinner.

SASE = (Self Addressed Stamped Envelope)

Find us on the web at www.tpscsd.org

Editor's e-mail: bjshramek@aol.com

Torrey Pines e-mail: torreypinesski@aol.com



CUT HERE



Torrey Pines
Ski Club

A California Non-Profit Corporation

Sign this application, with your dues check, to
Torrey Pines Ski Club, P.O. Box 82087, San Diego, CA 92138

Membership Application

Membership begins upon receipt of dues and approval of application and ends July 31st. **Full year dues are \$35. New members joining after April 1st pay \$15 for April-July 31st membership.** For more information, call 619-583-8832.

New Membership ☐

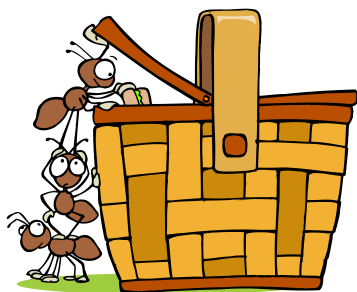
Renewal ☐

PRINT	FIRST NAME	MIDDLE INITIAL	LAST NAME	()	AREA CODE	TELEPHONE: HOME
NUMBER	STREET		UNIT NUMBER			
CITY	STATE		ZIP			
E-MAIL						
CELL PHONE						
CHECK INTERESTS:						
() SKIING		() GOLF				
() BIKING		() TENNIS		() VOLUNTEER		
() OTHER _____						

I hereby apply for membership in the TORREY PINES SKI CLUB. GENERAL RELEASE AND WAIVER - I release TPSC, its directors, officers, members and representatives from any and all claims or liability that may arise from participation in any of its activities and indemnify and hold them harmless from any claim by, or liability to, any guest of mine at club activities. I further waive my rights under California Civil Code Section 1542 which reads, "A general release does not extend to claims which the creditor does not know or suspect to exist in his favor at the time of executing the release, which if known by him must have materially affected his settlement with the debtor."

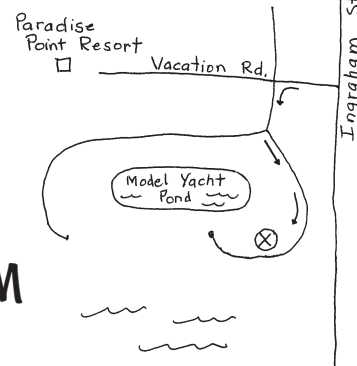
SIGNATURE

DATE



TPSC General Meeting

We're at the Beach
Paradise Point
Vacation Isle East
TUESDAY, JULY 1, 2008
Wear your Red, White and Blue
Social 6:00 PM • BBQ 7:00 PM



TPSC is providing grilled hot dogs, buns, condiments and paper goods.
You bring a side dish to share, (or \$5.00) and **YOUR OWN BEVERAGE.**
*Directions to Vacation Isle East: Ingram to Vacation Road and turn toward
The Paradise Point Resort (West). Turn left immediately before resort entrance,
follow road to the left . . . look for tables and covered area.

NO GLASS CONTAINERS of any kind. **NO PETS** and **NO ALCOHOL** (REMEMBER THE BOOZE BAN)

****PLEASE MARK YOUR CALENDAR FOR THE AUGUST 5TH MEETING ONBOARD THE BERKELEY.**



Torrey Pines Ski Club
P.O. Box 82087
San Diego, CA 92138-2087
619-583-8832

UPCOMING EVENTS-DETAILS INSIDE

July 5	Summer Pops
July 7	Reuben Fleet Museum
July 9	Taylor Guitars Tour
July 10	Beach Bunch
July 11	Happy Hour
July 15	Ethnic Dining
July 18	Walk with Louise and Janet
July 24	Beach Bunch
July 26	La Jolla Breakfast Bike Ride
July 27	Bocce Ball
July 31	Tower After Hours
July 31	SD Banjo Band
Aug. 1 and 8	Movie by the Sea
Aug. 5	General Meeting on the Berkeley
Aug. 17	Bocce Ball
Aug. 18	Silent Movie Balboa Park
Aug. 24	Coronado Bike/Concert
Sept. 13	Newport Beach Bike Ride
Oct. 1-3	Catalina Get Away

FIRST CLASS

July 2008